

M11

MERAKI  
RESIDENCE  
AL SHEROUK



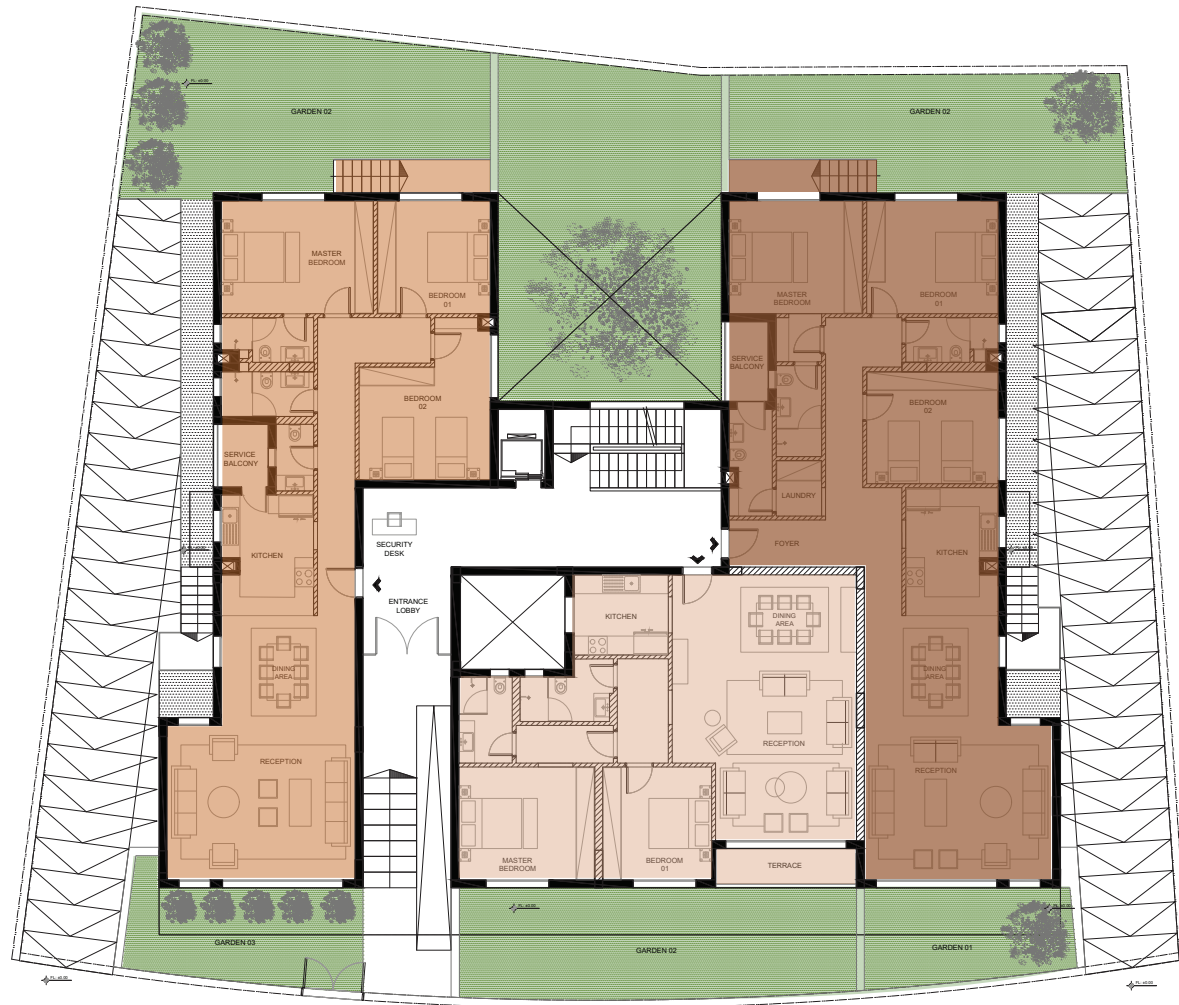






# GROUND FLOOR

## UNIT PLANS



# UNIT TYPES

## ENERGEIA EAST

204 SQM

Reception	6.00*4.93	Bedroom 2	4.18* 5.17
Dining	4.27*3.50	Master Bedroom	4.86*3.60
Kitchen	2.95*3.85	Master Bathroom	2.95*1.42
Guest Toilet	1.20*2.12	Service Balcony	1.75*2.00
Bathroom	2.95*1.43	Garden 01	82.55 sqm
Bedroom 1	3.60*3.60	Garden 02	21.50 sqm

## KARA

159 SQM

Reception	5.88*8.47	Master Bedroom	4.33*3.60
Kitchen	3.00*2.56	Master Bathroom	1.70*2.74
Bathroom	2.85*2.00	Terrace	4.49*1.25
Bedroom	3.60*3.60	Garden	42.85 sqm

## ENERGEIA WEST

220 SQM

Foyer	3.07*1.50	Bedroom 2	4.20*3.60
Dining	4.27*3.50	Master Bedroom	4.26*3.60
Reception	6.00*4.93	Master Bathroom	1.45*2.90
Kitchen	2.95*4.08	Service Balcony	1.50*2.55
Guest Toilet	1.37*3.40	Garden 01	71.45 sqm
Bathroom	2.94*1.43	Garden 02	20.56 sqm
Bedroom 1	4.20*3.60	Terrace	1.50*2.55

DISCLAIMER: The sales and purchase agreement constitutes all the rights and obligations agreed between the seller and the buyer, the content of this document is hereby considered as "a non-obligatory guiding draft".

# TYPICAL FLOOR UNIT PLANS



## UNIT TYPES

### LUCIA EAST



252 SQM

Foyer	3.00*1.50
Dining	4.27*3.30
Reception	6.00*5.95
Kitchen	3.06*3.06
Guest Toilet	1.60*1.40
Bathroom	2.53*1.43
Bedroom 1	3.76*3.60

Bedroom 2	4.27*3.60
Master Bedroom	4.70*3.60
Master Bathroom	2.88*1.58
Living	3.00*3.07
Laundry	2.88*1.43
Service Balcony	2.19*2.11
Terrace	6.25*2.00

### ZOI



219 SQM

Reception	5.70*9.25
Kitchen	3.19*2.55
Guest Toilet	1.45*1.40
Bathroom	2.58*2.27
Bedroom 1	3.60*3.60
Bedroom 2	3.60*4.15

Master Bedroom	3.67*5.58
Master Bathroom	1.98*2.27
Master Dressing	1.80*2.27
Terrace	8.09*2.00
Service Balcony	1.78*1.40

### LUCIA WEST



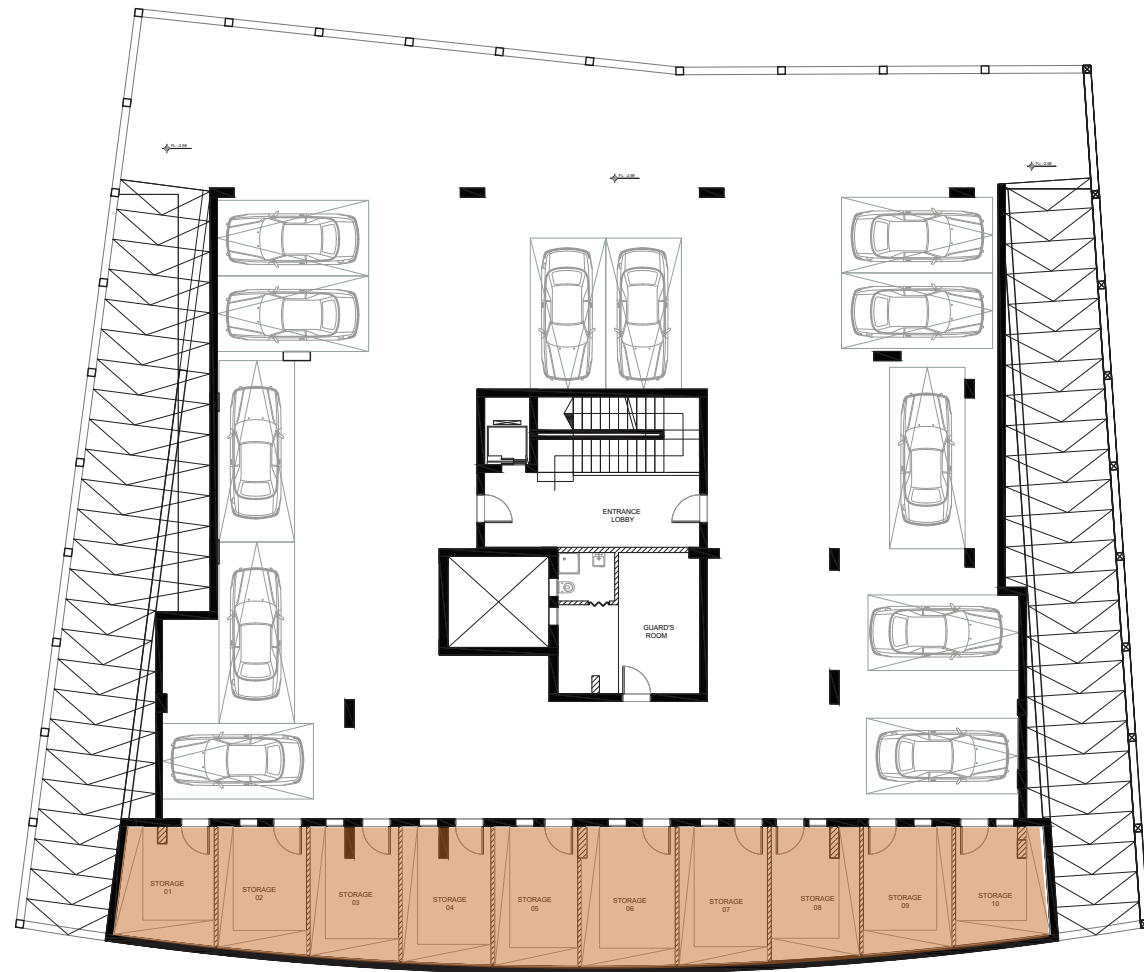
238 SQM

Foyer	3.02*1.50
Reception	6.00*7.92
Kitchen	2.95*3.18
Guest Toilet	1.60*1.40
Laundry	2.90*1.43
Bathroom	2.94*1.43
Bedroom 1	4.27*3.60

Bedroom 2	4.23*3.60
Master Bedroom	4.19*3.60
Master Bathroom	1.77*2.68
Master Dressing	2.90*1.98
Service Balcony	2.20*2.10
Terrace	1.96*3.80



# BASEMENT PLAN



# FACILITIES



SECURITY



CCTV



ELEVATOR



INTERCOM



LANDSCAPE



PARKING



STORAGE UNIT



ELECTRICAL METER/UNIT



CENTRAL SATELLITE



ACCESSIBILITY RAMP



WATER TANK



MOTION SENSOR



SERVICE BALCONY



PRIVATE GARDEN

DISCLAIMER: The sales and purchase agreement constitutes all the rights and obligations agreed between the seller and the buyer, the content of this document is hereby considered as "a non-obligatory guiding draft".







# MERAKİ

DEVELOPMENTS

WHERE DESIGN MEETS QUALITY

---

02 2352 1341/2

[WWW.MERAKI-EGYPT.COM](http://WWW.MERAKI-EGYPT.COM)



MERAKI\_DEVELOPMENTS